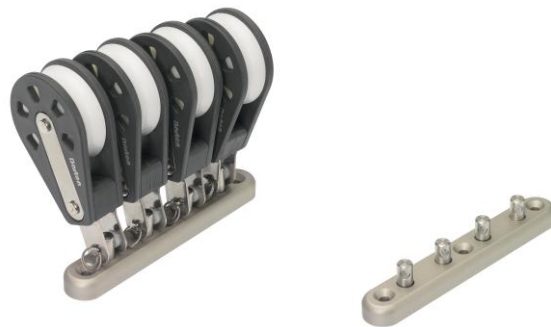


Product focus – 81 550 Mast Base Organiser

Barton Marine introduced the innovative mast base organiser (product # 81 550) into the range to help overcome one of the problems of leading lines aft on older yachts. The simple design features 4 swivel posts onto which double tang clevis pin blocks can be attached; these can rotate according to the angle of load as they divert lines to the deck organisers. Just three machine screws are required to support the unit which saves multiple hole drilling for individual stand up blocks or expensive stainless fabrication.



How to fit - 81 550 Mast Base Organiser

Our example is a Westery Centaur built in the 1970s, typically the mast control lines were lead to mast mounted winches and cleats which involved going up on deck to make adjustments.

The mast base organiser location is such that the lines exiting the mast have the best deflection to the deck organisers mounted on the coachroof, the images below show the ideal location and angle. The mast base area to be drilled into is solid fibreglass and quite thick so no issues with strength here, you do need access underneath so the headlining will need to be peeled back.



Drill out the holes to 6mm and introduce a suitable sealant onto the countersunk M6 machine screws and into the holes. It is a good idea to add a barrier cream such as Duralac onto the screw heads where they contact the anodised aluminium base. Underneath you can use large penny washers or make up a wooden or metal backing plate to spread the loading on the bolts. Use M6 nyloc nuts to secure and cut off the excess bolt length with a dremmel cutter or similar to get as flush a finish as possible for when the headlining is replaced.



Attach the correct sized double tang blocks (Size 3 on the Centaur part# 03 090) to the swivel posts using the plastic spacer washers provided for a snug fit then lead your control lines through.

The mast base organiser has a safe working load of 1540kg making it suitable for yachts up to 33ft (10m), another great product from Barton Marine!

