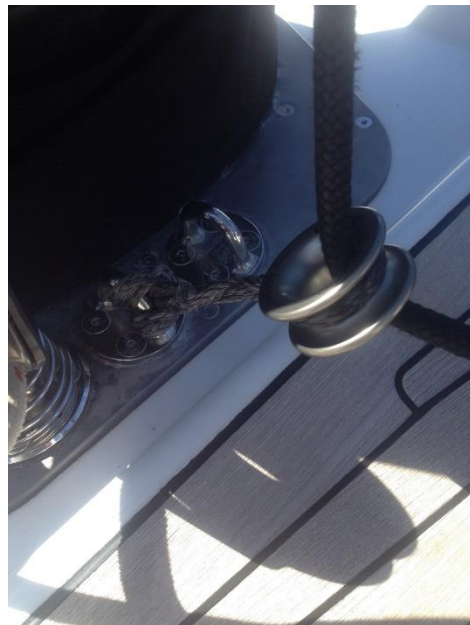


## High Load Eye with Dyneema Loop

The Barton High Load Eye with loop is available in 3 sizes and can be used in various applications on board including Baber hauler, preventers, mast base block, tidies, emergency, occasional and toe rail blocks etc.

The High Load Eye combined with the Dyneema loop gives you a fast, efficient, simple and extremely strong solution to changing the direction of any line. The spectro anodised aluminium eye is designed to have very good wear resistant properties with low friction, this combined with the Dyneema loop gives you exceptional low weight to very high performance load ratio.



### Part Number

**60460** - 4mm (3/16") Dyneema Loop with Load Eye 12mm (1/2") bore

**60461** - 7mm (1/4") Dyneema Loop with Load Eye 22mm (7/8") bore

**60462** - 9mm (3/8") Dyneema Loop with Load Eye 28mm (1 1/8") bore