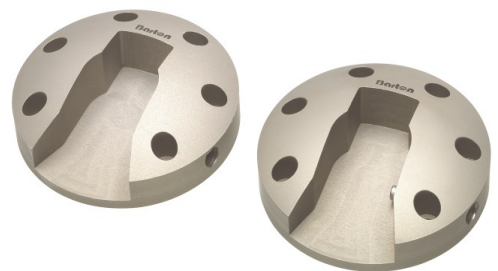


Barton's Removable Mainsheet Track System

This adaptable Mainsheet Track System is designed to span between the cockpit seats when sailing but is easily removable to ensure cockpit space is not compromised when you want to relax on board.

The Removable Track is available in 3 sizes and can be used on all yachts up to a maximum of 14.0m (46ft). The track has a maximum unsupported length of up to 800mm (31in). It can be attached and removed in seconds and uses Barton's Beam Section Track.

Fitting Barton Marine's new Removable Track couldn't be simpler, plates are bolted either side of the cockpit, on the cockpit wall, the track is then slid under these plates and lifted vertically, which automatically locks it in position. To remove the Mainsheet Track, you just push in the locking pin on either side, lower the track and slide it out of the way.



Note – All end plates are 100mm in diameter with 25mm hole spacing

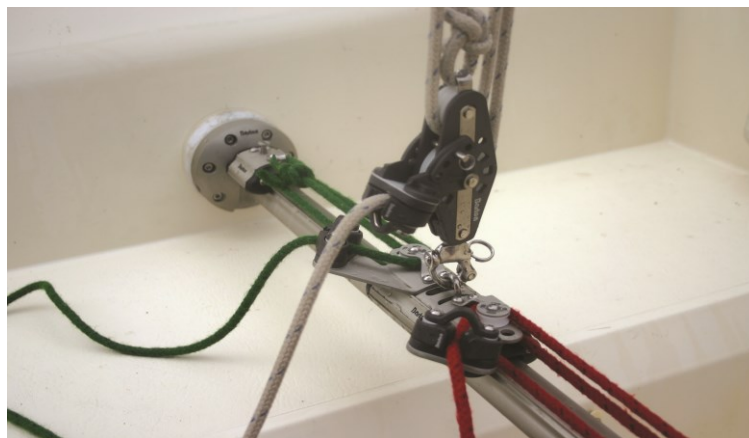
Bryan Downey's Jeanneau Sunfast 32i Size 2 system fitted the End Plates 24090 and the Beam Track 24003 can be seen to the right.

Removable Mainsheet Track System Size 1

Components required to make up a Removable Mainsheet System for a 28ft yacht. Available as a complete package, Part 20910.

- 20090 Track Ends (pair)
- 20003 Beam Track 1 metre
- 20101 Traveller Car
- 20110 End Fittings (pair)
- 20112 Control Line Blocks (pair)
- 20117 Traveller Cleat Plate Assembly

Specifications	Size1
Max unsupported length	400mm
H Height	27mm
W Width W	20mm
Width W2	26mm



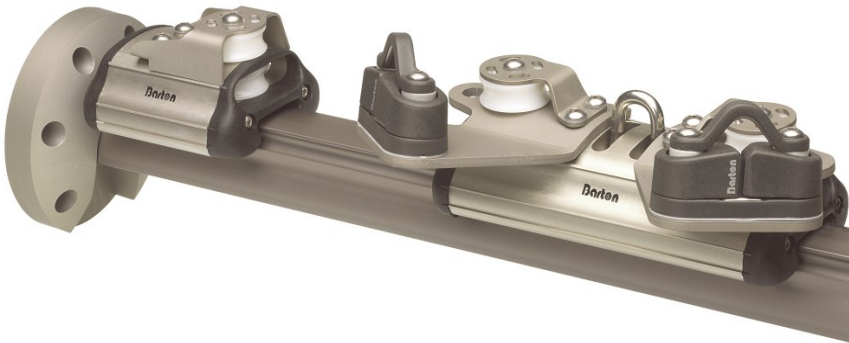
The Removable Track System is available in 3 sizes and can be used on yachts up to a maximum of 14.0m (46ft).

Removable Mainsheet Track System Size 2

Components required to make up a Removable Mainsheet System for a 36ft yacht. Available as a complete package, Part 24910

- 24090 Track Ends (pair)
- 24003 Beam Track 1 metre
- 24101 Traveller Car
- 24110 End Fittings (pair)
- 24112 Control Line Blocks (pair)
- 24117 Traveller Cleat Plate Assembly

Specifications	Size 2
Max unsupported length	700mm
H Height	34.5mm
W Width W Width W2	26mm 34mm



Designed to span between the cockpit seats when sailing but easily removed when moored.

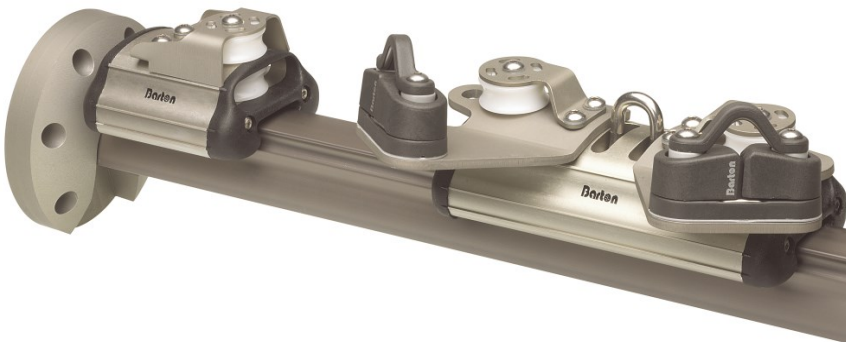
The Removable Track System is available in 3 sizes and can be used on yachts up to a maximum of 14.0m (46ft).

Removable Mainsheet Track System Size 3

Components required to make up a Removable Mainsheet System for a 46ft yacht. Available as a complete package, Part 30910

- 30090 Track Ends (pair)
- 30003 Beam Track 1 metre
- 30101 Traveller Car
- 30110 End Fittings (pair)
- 30112 Control Line Blocks (pair)
- 30117 Traveller Cleat Plate Assembly

Specifications	SIZE 3
Max unsupported length	800mm
H Height	30mm 40mm
W Width W Width W2	40.5mm

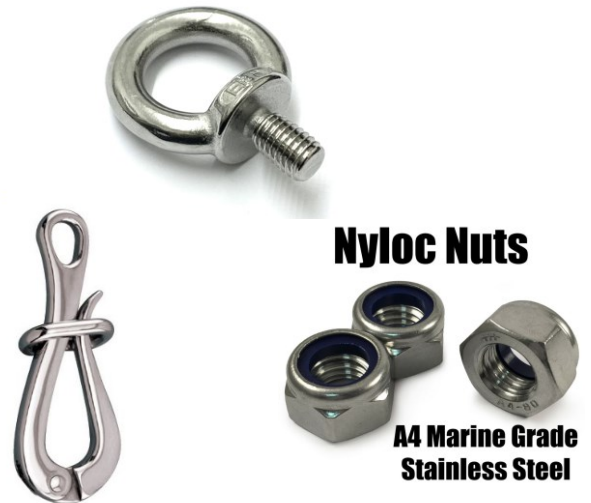


Designed to span between the cockpit seats when sailing but easily removed when moored.

The Removable Track System is available in 3 sizes and can be used on yachts up to a maximum of 14.0m (46ft).

Installing for Excessive Unsupported Widths

An eye nut with a Nyloc nut locked into the centre of track with a Dyneema lashing to a pelican hook is an ideal way to connect the centre of the track to the cockpit floor. This allows the upward load from the Mainsheet to be spread across the surface area.



A similar construction with stainless steel wire and a U-Bolt secured in the cockpit floor can also be installed.