

BULKHEAD PIPE GLANDS

In consultation with Naval architects and engineers, boat builders and surveyors, Barton responds with a proven Bulkhead Gland design to allow pipes and tubes to move through vessel compartments providing vapour and watertight integrity, meeting the new MCA Work Boat Code 3 and MGN 200/280 regulations.

Ideal for boat builders, restorers and refitters to meet challenging new marine protocols and satisfy requirements for workboats and leisure charters to seal bulkheads as proficiently as petrochemical equipment glands. Barton Bulkhead Pipe Glands make use of two different resins to meet heat resistant factors for pipes. They are designed specifically as robust seals for marine vessels with longer stainless steel studs for bulkhead wall variances and curved surfaces – while allowing for pipes and tubes to be adjusted and serviced. Bolt and clamp fittings can be removed quickly and easily with basic tools. Manufactured in high grade, light grey material means they blend in with the bulkhead for style and performance.

COMPLIANT

MGN 200
MCA Work Boat Code 3
MGN 280
SPV CODE (Draft)



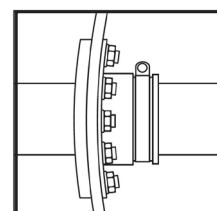
Barton Bulkhead Pipe Glands tick all the boxes:

- Vapour and watertight construction
- Seals the aperture for pipe and tube Integration
- Compatible for angled pipes & curved surfaces
- Sealed but fully serviceable & adjustable
- Stainless Steel and Nitrile Rubber (BS2751)
- Suitable for bulks up to 35mm thick

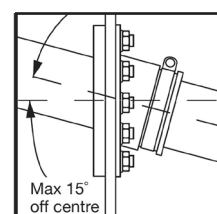


**Barton Marine
Meets the
Challenge!**

PHOTO NO.	Part Number	DESCRIPTION	DESIGN FOR PIPE OD ø mm	DESIGN FOR PIPE OD ø Inch	Hole Cutter Diameter	No Fasteners & Size
1	BPG-50	BULKHEAD PIPE GLAND 50 mm OD	45-50mm	1 3/4" - 2"	60mm - 6 3/8"	4 x M6
1	BPG-63	BULKHEAD PIPE GLAND 63 mm OD	58-63mm	2 5/16" - 2 1/2"	108mm - 4 1/4"	6 x M6
1	BPG-110	BULKHEAD PIPE GLAND 110mm OD	98-110mm	3 7/8" - 4 5/16"	140mm - 5 1/2"	10 x M6
1	BPG-180	BULKHEAD PIPE GLAND 180mm OD	160-180mm	6 5/16" - 7 1/16"	200mm - 8"	12 x M6
2	BPI-25	BULKHEAD REDUCING INSERT 25mm OD for BPG-50	22.5-25mm	7/8" - 1"		
2	BPI-32	BULKHEAD REDUCING INSERT 32 mm OD for BPG-50	28 -32mm	1 1/8" -1 1/4"		
2	BPI-50	BULKHEAD REDUCING INSERT 50 mm OD for BPG-63	45-50mm	1 3/4" - 2"		
2	BPI-75	BULKHEAD REDUCING INSERT 75mm OD for BPG-110	68-75mm	2 11/16" - 3"		
2	BPI-90	BULKHEAD REDUCING INSERT 88mm OD for BPG-110	82-90mm	3 1/4" - 3 7/16"		
2	BPI-125	BULKHEAD REDUCING INSERT 125mm OD for BPG-180	105-125mm	4 1/8" - 5"		
2	BPI-140	BULKHEAD REDUCING INSERT 140mm OD for BPG-180	117-140mm	4 5/8" - 5 1/2"		
2	BPI-160	BULKHEAD REDUCING INSERT 160mm OD for BPG-180	122-160mm	4 13/16" - 6 5/16"		
3	BPB-50	BLANKING PLUG INSERT for BPG-50	NO HOLE	NO HOLE		
3	BPB-63	BLANKING PLUG INSERT for BPG-63	NO HOLE	NO HOLE		
3	BPB-110	BLANKING PLUG INSERT for BPG-110	NO HOLE	NO HOLE		
3	BPB-180	BLANKING PLUG INSERT for BPG-180	NO HOLE	NO HOLE		



Suitable for curved surfaces and angled pipe entry



1



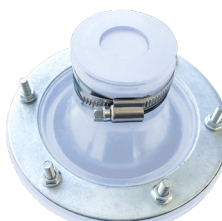
BPG - BULKHEAD PIPE GLANDS - 4 popular sizes of Barton Bulkhead Glands (BPG) for pipes and tubes are supplied as standard. The Glands are moulded from Nitrile Rubber with heat resistance to 105 °C. The excellent physical properties and Shore hardness of Nitrile Rubber means no sealants or mastics are required and the stainless fittings allow for adjustments and servicing. Standard Gland sizes can be converted for different size pipes using Barton Bulkhead Reducing Inserts.

2



BPI - BULKHEAD REDUCING INSERTS - Barton's Bulkhead Reducing Inserts (BPI) reduce the aperture diameter to allow standard Gland conversion for multiple pipe and tube sizes. When using Barton Inserts with the Barton Bulkhead Pipe Glands, heat resistance increases to 150 °C. The Bulkhead heat Inserts shield the Gland and pipe while sustaining a superior bulkhead seal.

3



BPB - BULKHEAD BLANKING PLUGS - Barton's Bulkhead Blanking Plugs (BPB) are primarily used to seal off the Gland. This seal can be permanent or temporary. Plugs can be drilled or cut to match a different size diameter or aperture shape when required.